

RAMCO  **HICEM**
Fibre Cement Board

**INSTALLATION
MANUAL**



Loading and Storage Handling Instructions

Wear appropriate safety equipment - Dust Mask or Respirator, Goggles, Safety Helmet and Hand Gloves.



DONT'S ❌

Do not drag the Boards off the stack



DO'S ✅

Boards must be lifted off the stack



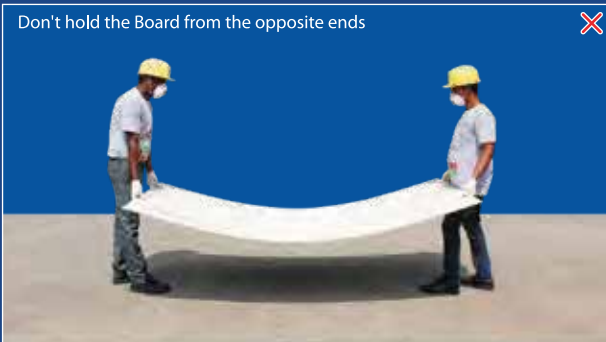
Don't store Boards horizontally or vertically



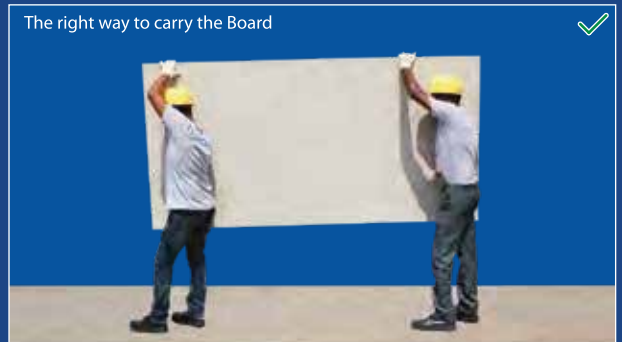
Boards must be stacked on level surface over a pallet



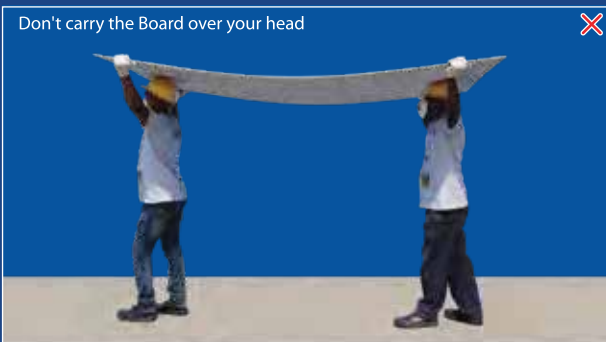
Don't hold the Board from the opposite ends



The right way to carry the Board



Don't carry the Board over your head



Storage

Keep boards covered off the ground over the pallet on a clean, flat and level surface that is protected from direct exposure to weather.





Board Cutting

Do's

Cut the board face down when using a circular saw or mechanical Shears. Cover the saw table with a piece of carpet or soft cover to avoid scratches on the face of the board.

Cut the board in open and ventilated area.

Use a diamond cutting disc blade or hack saw.

Dont's

Do not use wood cut blade. (Because it develops more dust and is hard to cut)

Avoid cutting vertically.



Recommended Tools

Cutting Machine

Marble Cutting machine with Diamond cutting disk blade

Screws and Drilling Machine

Self Drilling and Tapping Screws with Phillips head

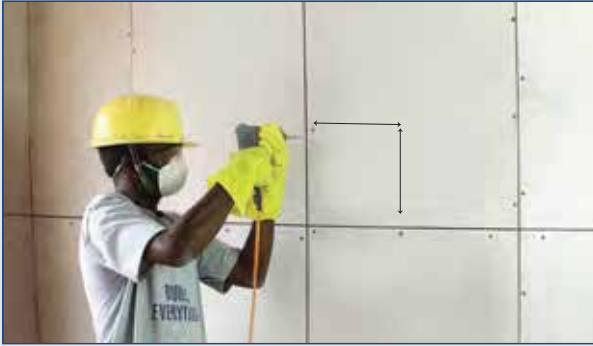


Partition

Channel Fixing

Mark the floor/ceiling with plumb line. Fix the floor/ceiling channel using Metal anchor. Place the Studs in between floor/ceiling on every 610 mm center to center.

Install intermediate channels if height exceed the board length. Channel to be fixed at every 2/4 feet or required height of the partition.



Screw Fixing / Fastening

- Must be non-corrosive and designed for use with fibre cement board
- Screw type is determined by application and/or wall design. For floor/wall/ceiling, wooden screw / metal anchor can be used for fixing GI channels
- Always use self drilling and tapping screws with Phillips head to fix boards.
- Length 25/38/50 mm as required

When fixing the screw on the board, it should be 25mm from all corners and 15mm from edges of the board.

Maintain 3-4 mm gap from board to board

Insulation

Rock wool/Glass wool/Ceramic wool to be placed in the cavity of the partition.

Note: Density and dimension are based on selection / required specification.

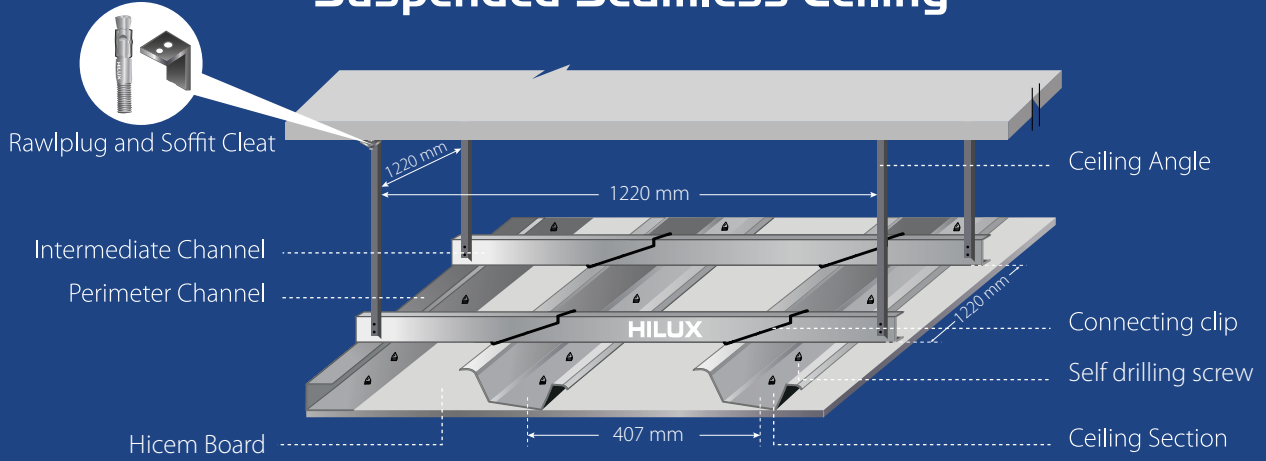
Provide MEP servicing conduits, if necessary
Provide membrane (vertical / horizontal) bracing for additional support for hang-loads (Air Conditioners, TVs, Wash Basins, etc.)

Board Fastening

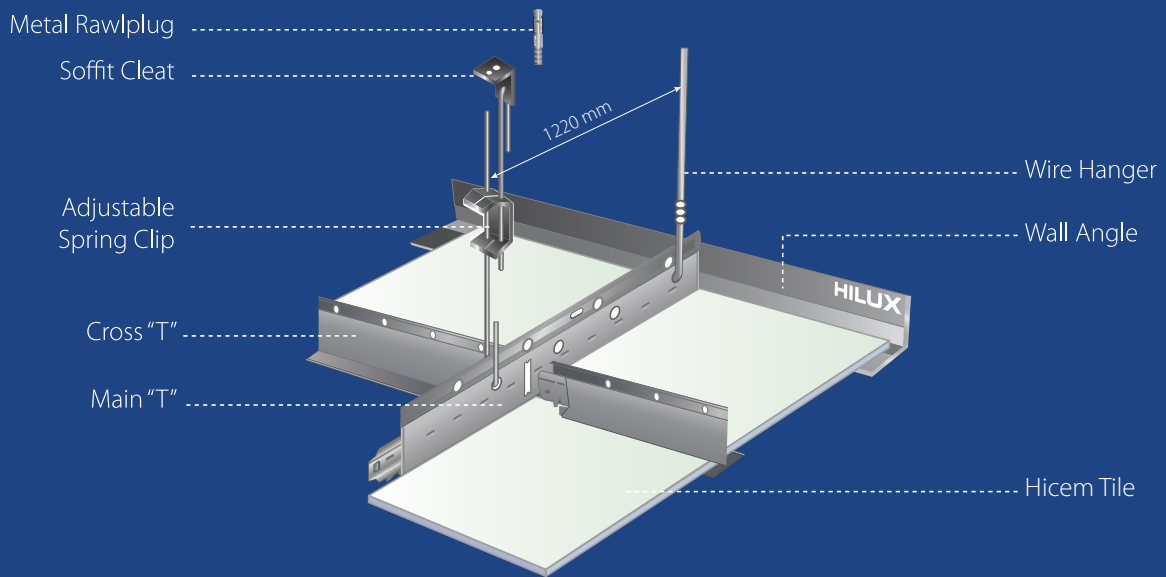
- The boards should be fastened to studs or solid framing - a maximum of 250 mm on center
- In some instances, there may not be a stud or framing available to fasten into - such as, along a rake, inside or outside corners, or at a window or door opening. In these areas, the boards must be fastened to a structural - rated sheathing
- Ensure tapping vertical and horizontal portion before installing the board



Suspended Seamless Ceiling



Suspended Grid Ceiling



Application Matrix

Components/ Application*	Board size in mm*				Thickness in mm*								
					4	6	8	10	12	16	18		
Dry Wall Partition	2440x1220	1830x1220					★	★	★				
Wall cladding/Paneling	2440x1220	1830x1220						★	★				
Seamless ceiling	2440x1220	1830x1220					★						
Grid ceiling	1220x610	1195 x 595			★	★							
Mezzanine Floors	2440x1220	1830x1220	610x610	595x595									★
Doors	2440x1220	1830x1220						★	★	★			
Kitchen Cabinets/ Wardrobe/Shelves	2440x1220	1830x1220								★	★		
Wet Areas	2440x1220	1830x1220					★	★					
Duct Encasements	2440x1220	1830x1220					★	★					
External Sign Board	2440x1220	1830x1220					★	★					
Roof Under lay	2440x1220	1830x1220					★	★	★				
Staircase Steps	2440x1220	1830x1220									★	★	

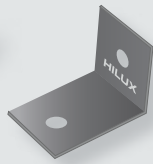
*We reserve the right to make technical changes at any time.

General Accessories

Ceiling Seamless Finish - Accessories



Intermediate Channel



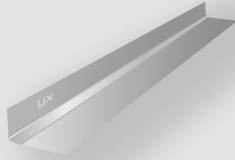
Soffit Cleat



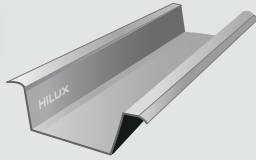
Connecting Clip



Metal Rawlplug



Ceiling Hanger



Ceiling Section

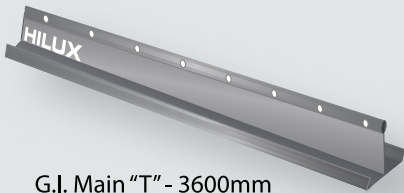


Perimeter Channel

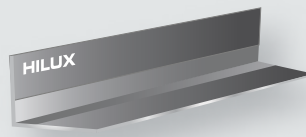


Self Drilling Screw with Underhead Cutter

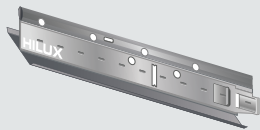
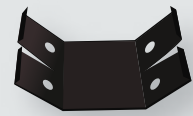
Grid Ceiling - Accessories



G.I. Main "T" - 3600mm



Wall Angle



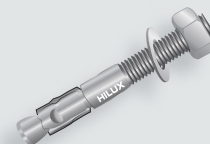
G.I. Cross "T" - 1200mm



Self Drilling Screw with Underhead Cutter



Soffit Cleat



Metal Rawlplug



Level Clip with Wire



G.I. Cross "T" - 600mm

Jointing and Finishing

(Square / Taper Edge)



Jointing Compound

Recommended Materials

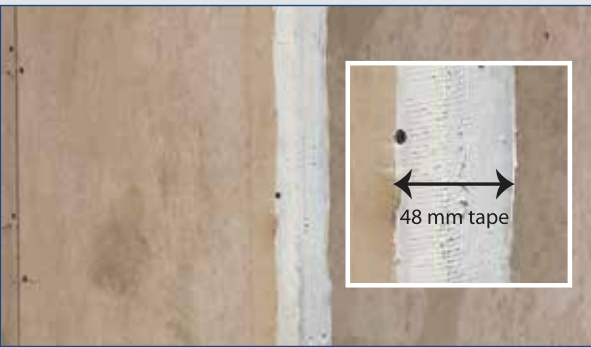
Jointing Compound

Knauf USG (all purpose jointing compound)
or formulated jointing compound



- Apply 1st coat 76 mm wide on the joint area
- Coat 2 - Spread a 100 mm wide layer of jointing compound along the seam
- Coat 3 - Apply the jointing compound 150 mm wide over the second coat

Note: Ensure 2-4 hours of curing time for each coat (as per climatic condition)



Finishing

- Leave it for 24 hours or as per climatic condition to dry and use 120/140 grit sandpaper to smoothen the walls



- Finish all MEP cut out works before start of the jointing and finishing
- Ensure board should be tapered before jointing and finishing (vertical and horizontal)
- Remove the edge tape
- Clean the surface area
- Apply the jointing compound paste mixture initially in the 3-4 mm gap
- Fix the fibre mesh tape on the joint area and spread evenly on either side of the joint (48 mm wide)



CORNER JOINTS (Internal and External)

- Fold the fibre mesh tape as 24 mm x 24 mm and fix
- Jointing and finishing to be done over the installed screws
- All cut-outs to be taken before the jointing finishing application
- Fix the masking tape on both sides spread over the board's edges



Primering

Cement primer to be applied on entire surface area before putty / painting / wall paper or any other decorative application

*Paint to be applied as per paint manufacturer's recommendation.

Sealing (Option 2)



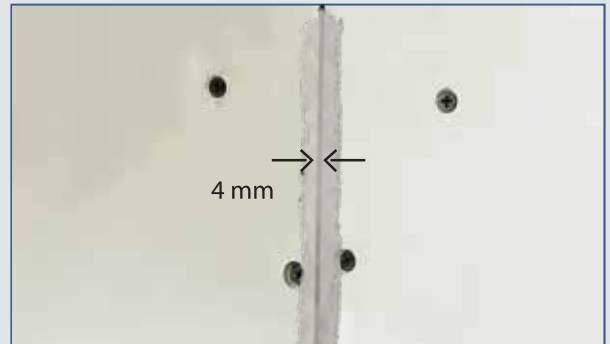
Sealant

Bostik 2637 or Boss PU sealant



Jointing and Finishing

- Fix masking tape on two boards joint area to avoid spreading the sealant material
- Apply sealant 4 mm in between two boards
- Remove the masking tape
- Apply cement based primer and putty on surface
- Do not butt the two Boards
- Do not fix fibre mesh tape in joints area
- Use only paintable sealants



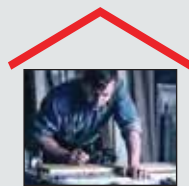
Ramco SmartBuild is an end-to-end Service and Solutions initiative for Dry Construction

Ramco Industries Limited

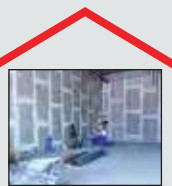
Auras Corporate Centre,
98-A, Dr. Radhakrishnan Salai,
Mylapore, Chennai - 600 004

☎ 044 4298 3109 / 91767 75882

✉ info@ril.co.in www.ramcohicem.com



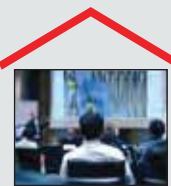
**Design &
Material
Consultancy**



**Project
Execution**



**Site Quality
Assurance**



**Training in
Dry Construction
methods**

Standard details available from Ramco Industries Ltd.
Please contact Smart Build technical service team.



BS EN 12467:2012

© Copyright 2023 Ramco Industries Limited. All rights reserved. Information given is to the best of our knowledge and belief, accurate and reliable as of the date compiled. It is the user's responsibility to satisfy himself as to the suitability and completeness of such information for his own particular use.

As our policy of continuous improvement, we reserve the right to modify our specifications any time without notice. Product colours and texture may vary due to climatic conditions or due to limitations in the brochure printing process. Please check the latest version on the website or contact your local Ramco Industries representative.